



DRILLING LOG



FROM :(mt) 1050

TO :(mt) 2190

SCALE : 1/ 1000

Well Name : BMA A20A

Company : ESSO AUSTRALIA

Country : AUSTRALIA

RT-MSL : 32.82 m

Final TD :

RT-SEABED : 92.22 m

Final TVD :

Generated by ALS Package

DATE	ROP (m/hr)				DEPTH (m)	LITHOLOGY	WOB klbs				RPM			SPP psi				FLOW gpm			TORQ lb-ft		
	500	50	5	.5			10	20	30	40	100	200	300	1K	2K	3K	4K	250	500	750	5K	10K	15K
	MWD Gamma Ray (api)				0																		
					100																		
					200																		
					1050																		
					1070																		
					1090																		
					1110																		
					1130																		
					1150																		

PREVIOUS WELL HISTORY
Plugged & Abandoned October, 2005

10-3/4" Surface Csg 1123.0m MDRT

MW: 9.6
FV: 54
FV: 13
YP: 19
Gel: 7/16
WI: 5.0
pH: 10.8
Cl: 35.5k

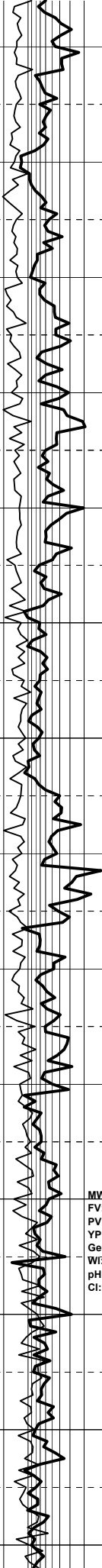
BIT #1 8-1/2"
Smith S73PX
Jets: 6x20
In : 1123.0m MDRT
Out : 1193.0m MDRT
Run : 70m
Hrs : 1.2
Cond: 0-0-NO-A-X-IN-NO-DP

Bream A20A spudded from 1123.0m MDRT at 01:30 hours on 14-10-2005.

7" Casing cut and pulled from 1195.0m MDRT. Cement plug at 1106.0m MDRT. Cement drilled from 1106.0m MDRT to 1193.0m MDRT without formation. Cement plug #2 at 1079.0m MDRT

Mud motor K=0.29 rev/gal

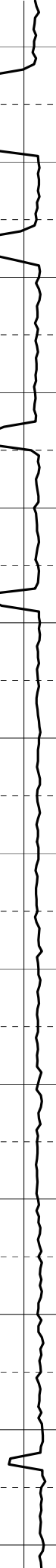
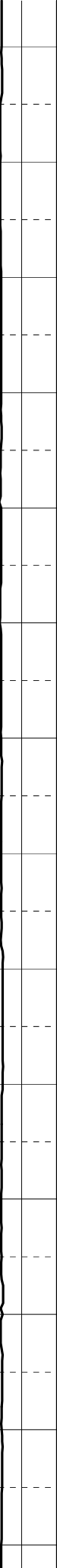
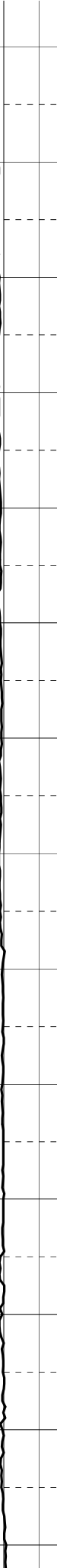
PIT at 1159.0m MDRT 900.7m TVDRT
540 psi 9.5 ppg EMW:13.0 ppg



1430
1450
1470
1490
1510
1530
1550
1570
1590
1610
1630
1650
1670
1690



Handwritten annotations in the center of the grid, including the letters 'V', 'A', and 'U' written vertically and horizontally, along with other illegible scribbles.

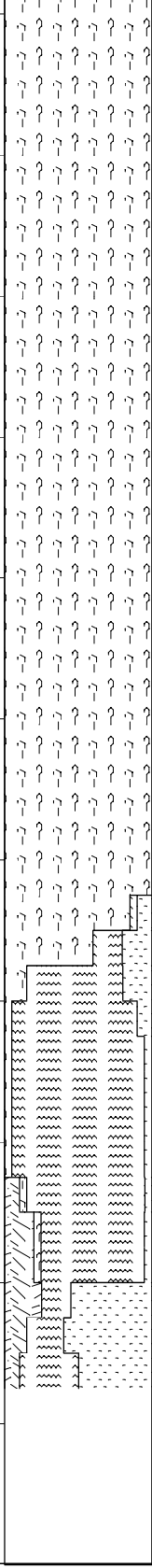
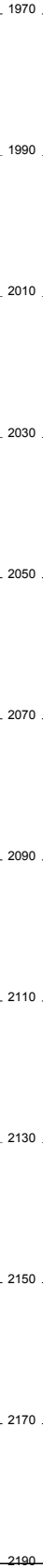
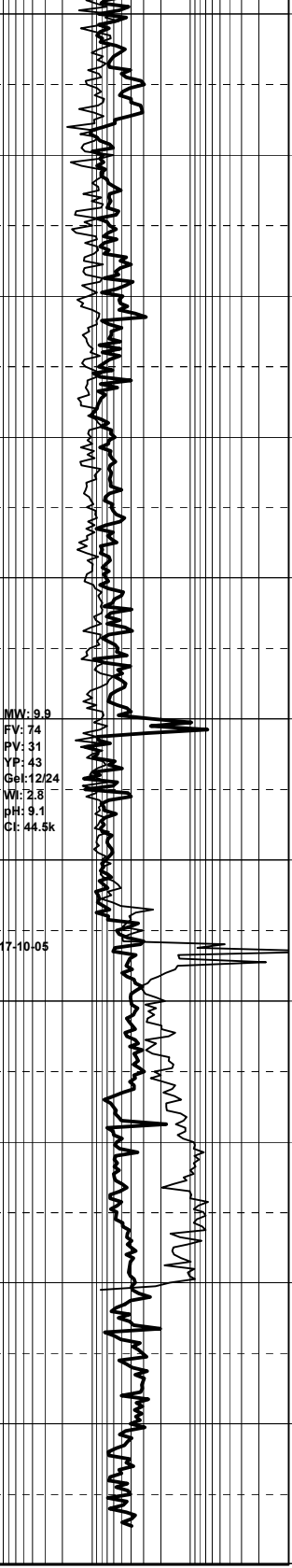


MW: 9.8
FV: 69
PV: 26
YP: 42
Gel: 12/18
WF: 3.7
pH: 9.3
Ct: 39k



MW: 9.9
FV: 74
YP: 43
Gel: 12/24
Wt: 2.8
pH: 9.1
Cl: 44.5k

17-10-05



Handwritten notes:
The bottom of PVA was the water table of the main well. The water table was high at the time of the test.

